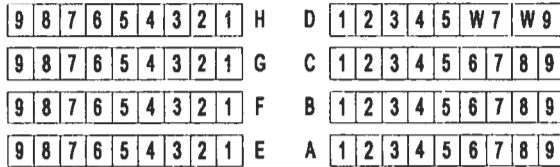




CIRCLE BALCONY



SEATING PLAN FOR

CAIRD HALL

STALLS - ROWS A-K, Q + T	= 380
STALLS - ROWS L-HH, R + U.....	= 607
TIERED SEATING & ROWS S + V.....	= 267
WHEELCHAIRS - STALLS.....	= 9
FRONT BALCONY.....	= 174
CENTRE BALCONY.....	= 156
CIRCLE BALCONY.....	= 206
WHEELCHAIRS - BALCONY.....	= 4
STANDING BALCONY.....	= 84
GALLERY.....	= 364

TOTAL = 2251

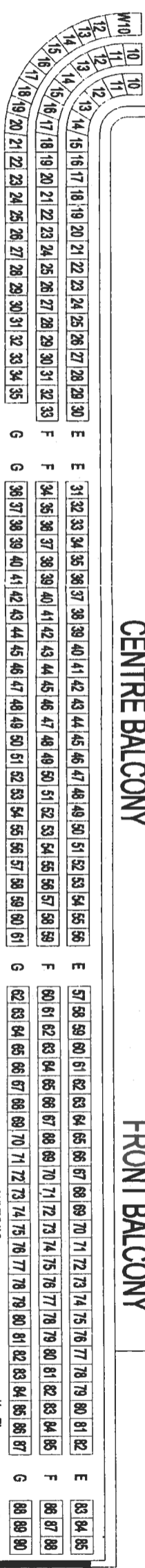
CHORUS GALLERY..... = 250

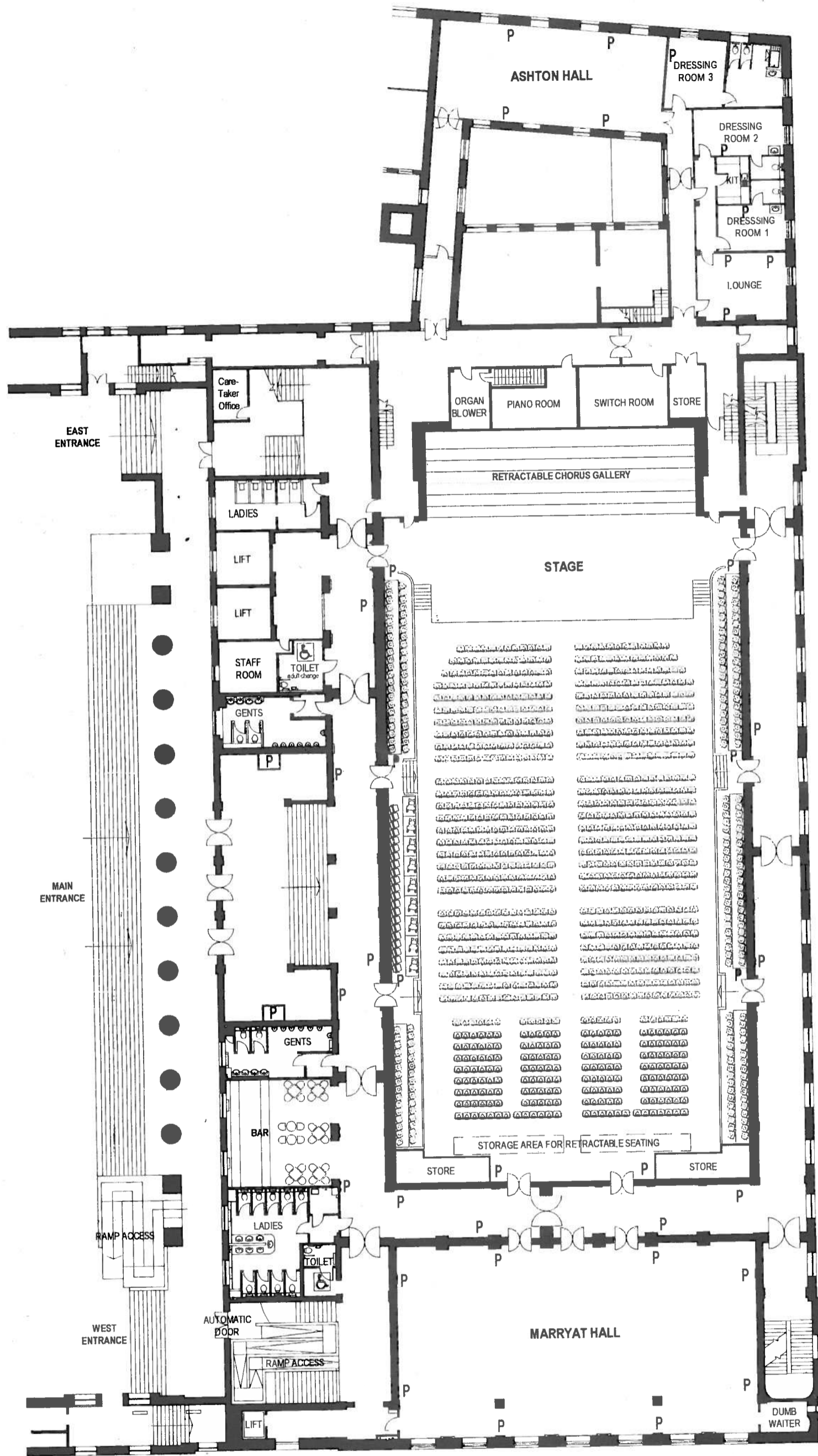
Caird Hall.....	35.400 m x 20.726 m (116ft. x 68ft.)
Stage.....	17.225 m x 12.635 m Gradient..... 1 in 34 (2.9%)
Marryat Hall.....	24.993 m x 13.411 m (82 ft. x 44 ft.)
Height to Ceiling.....	5.181 m (17 ft.)
Height to Underside of Beam.....	4.267 m (14 ft.)
Ashton/Craigie Hall.....	15.849 m x 6.705 m (52 ft. x 22 ft.)
2 North Corridors.....	72.542 m x 2.971 m (238 ft. x 9 ft. 9 ins.)
2 South Corridors.....	61.264 m x 2.819 m (201 ft. x 9 ft. 3 ins.)
Cross Corridors West End.....	26.365 m x 3.096 m (86 ft. 6 ins. x 10 ft. 2 ins.)
Billboard at front of Hall.....	2.590 m x 0.915 m (8 ft. 6 ins. x 3 ft.)
Width of Corridor Door.....	1.447 m (4 ft. 9 ins.)
Width of Lift Doors.....	2 m
Height of Lift Doors.....	2.1m

STAGE

Loading - 5 Kn per m²

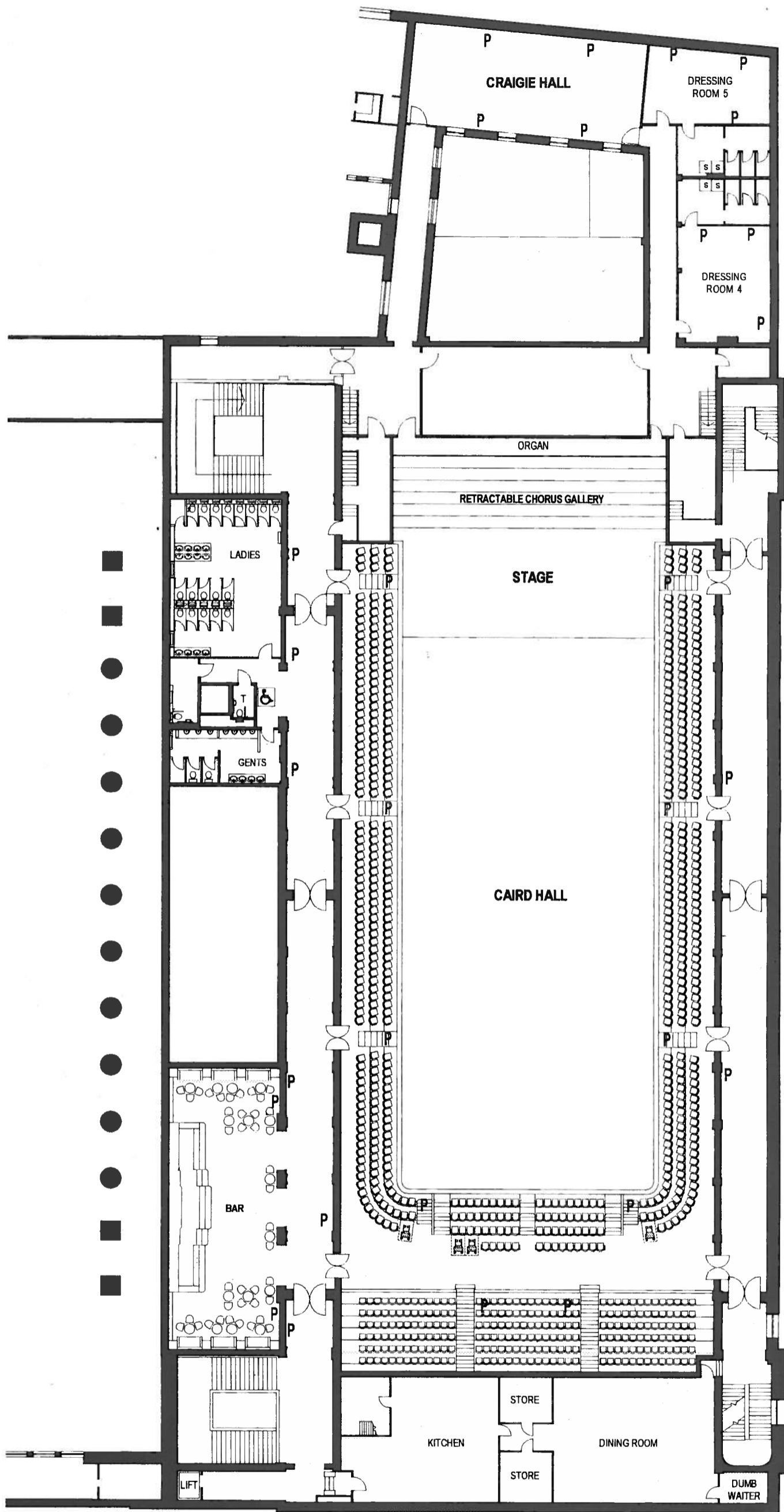
4.5 Kn Point Load (min spread 300mm²)





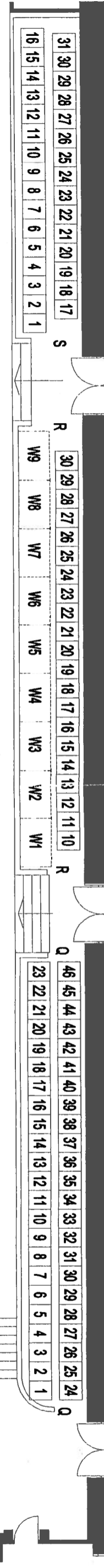
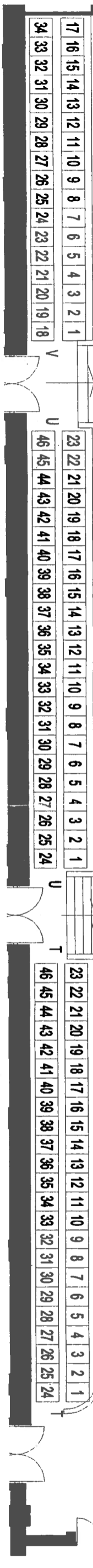
P - ELECTRIC POINT

GROUND FLOOR



P - ELECTRIC POINT

BALCONY



SS	26	25	24	23	22	21	20	19	18	17	16	15	14	13	12	11	10	9	8	7	6	5	4	3	2	1	SS
RR	22	21	20	19	18	17		16	15	14	13	12		11	10	9	8	7		6	5	4	3	2	1	RR	
QQ	22	21	20	19	18	17		16	15	14	13	12		11	10	9	8	7		6	5	4	3	2	1	QQ	
PP	22	21	20	19	18	17		16	15	14	13	12		11	10	9	8	7		6	5	4	3	2	1	PP	
NN	22	21	20	19	18	17		16	15	14	13	12		11	10	9	8	7		6	5	4	3	2	1	NN	
MM	22	21	20	19	18	17		16	15	14	13	12		11	10	9	8	7		6	5	4	3	2	1	MM	
LL	22	21	20	19	18	17		16	15	14	13	12		11	10	9	8	7		6	5	4	3	2	1	LL	
KK	22	21	20	19	18	17		16	15	14	13	12		11	10	9	8	7		6	5	4	3	2	1	KK	
JJ	22	21	20	19	18	17		16	15	14	13	12		11	10	9	8	7		6	5	4	3	2	1	JJ	

TIERED SEATING - ROWS JJ-SS & ROWS S + V, 267 seats

HH	30	29	28	27	26	25	24	23	22	21	20	19	18	17	16	15	14	13	12	11	10	9	8	7	6	5	4	3	2	1	HH
GG	30	29	28	27	26	25	24	23	22	21	20	19	18	17	16	15	14	13	12	11	10	9	8	7	6	5	4	3	2	1	GG
FF	30	29	28	27	26	25	24	23	22	21	20	19	18	17	16	15	14	13	12	11	10	9	8	7	6	5	4	3	2	1	FF
EE	30	29	28	27	26	25	24	23	22	21	20	19	18	17	16	15	14	13	12	11	10	9	8	7	6	5	4	3	2	1	EE
DD	30	29	28	27	26	25	24	23	22	21	20	19	18	17	16	15	14	13	12	11	10	9	8	7	6	5	4	3	2	1	DD
CC	30	29	28	27	26	25	24	23	22	21	20	19	18	17	16	15	14	13	12	11	10	9	8	7	6	5	4	3	2	1	CC
BB	30	29	28	27	26	25	24	23	22	21	20	19	18	17	16	15	14	13	12	11	10	9	8	7	6	5	4	3	2	1	BB
AA	30	29	28	27	26	25	24	23	22	21	20	19	18	17	16	15	14	13	12	11	10	9	8	7	6	5	4	3	2	1	AA
V	30	29	28	27	26	25	24	23	22	21	20	19	18	17	16	15	14	13	12	11	10	9	8	7	6	5	4	3	2	1	V
U	30	29	28	27	26	25	24	23	22	21	20	19	18	17	16	15	14	13	12	11	10	9	8	7	6	5	4	3	2	1	U
T	30	29	28	27	26	25	24	23	22	21	20	19	18	17	16	15	14	13	12	11	10	9	8	7	6	5	4	3	2	1	T
S	30	29	28	27	26	25	24	23	22	21	20	19	18	17	16	15	14	13	12	11	10	9	8	7	6	5	4	3	2	1	S
R	30	29	28	27	26	25	24	23	22	21	20	19	18	17	16	15	14	13	12	11	10	9	8	7	6	5	4	3	2	1	R
Q	30	29	28	27	26	25	24	23	22	21	20	19	18	17	16	15	14	13	12	11	10	9	8	7	6	5	4	3	2	1	Q
P	30	29	28	27	26	25	24	23	22	21	20	19	18	17	16	15	14	13	12	11	10	9	8	7	6	5	4	3	2	1	P
N	30	29	28	27	26	25	24	23	22	21	20	19	18	17	16	15	14	13	12	11	10	9	8	7	6	5	4	3	2	1	N
M	30	29	28	27	26	25	24	23	22	21	20	19	18	17	16	15	14	13	12	11	10	9	8	7	6	5	4	3	2	1	M
L	30	29	28	27	26	25	24	23	22	21	20	19	18	17	16	15	14	13	12	11	10	9	8	7	6	5	4	3	2	1	L

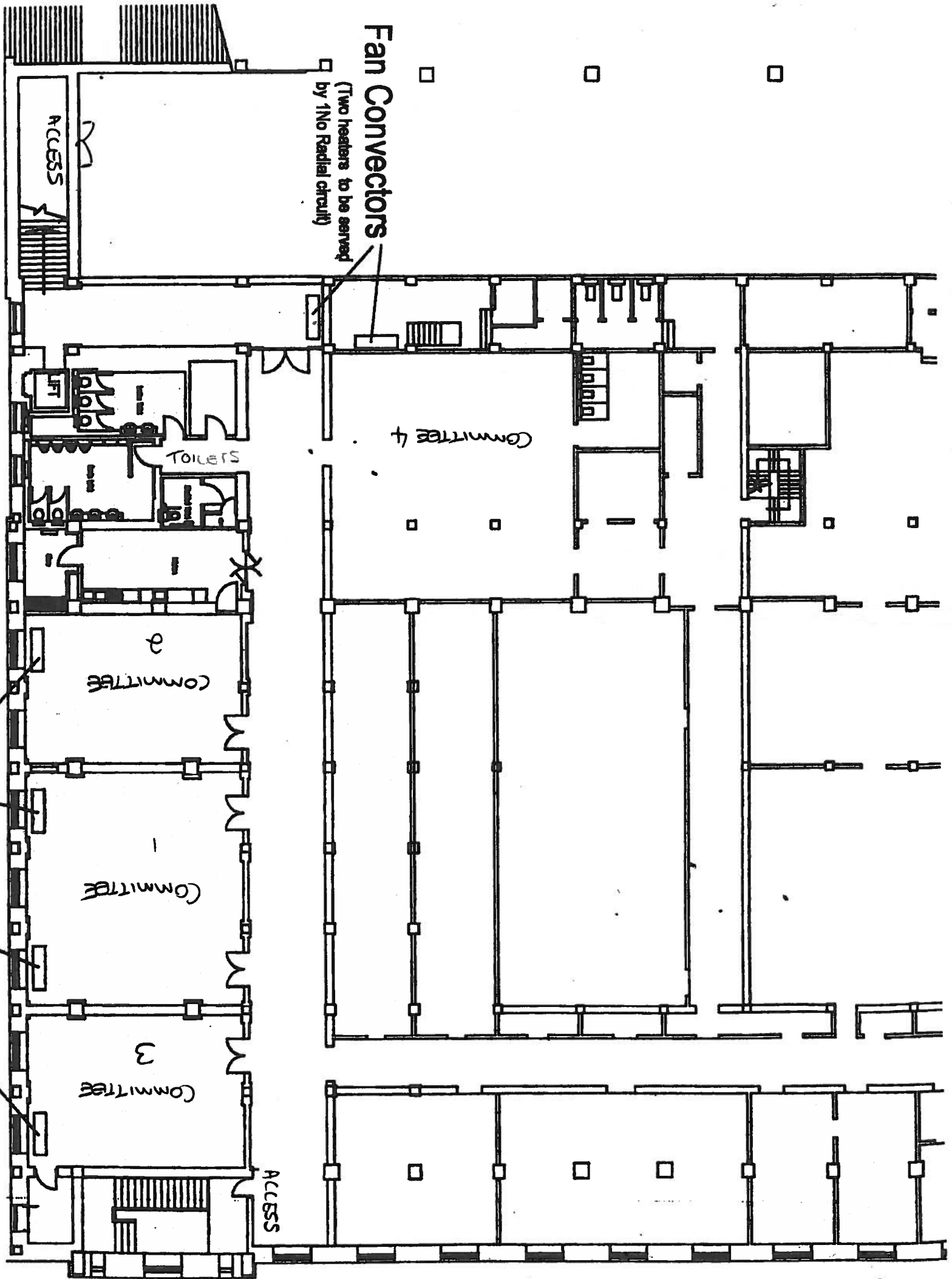
STALLS - ROWS L-HH, R + U, 607 seats & 9no. WHEELCHAIRS

K	30	29	28	27	26	25	24	23	22	21	20	19	18	17	16	15	14	13	12	11	10	9	8	7	6	5	4	3	2	1	K
J	30	29	28	27	26	25	24	23	22	21	20	19	18	17	16	15	14	13	12	11	10	9	8	7	6	5	4	3	2	1	J
H	30	29	28	27	26	25	24	23	22	21	20	19	18	17	16	15	14	13	12	11	10	9	8	7	6	5	4	3	2	1	H
G	30	29	28	27	26	25	24	23	22	21	20	19	18	17	16	15	14	13	12	11	10	9	8	7	6	5	4	3	2	1	G
F	30	29	28	27	26	25	24	23	22	21	20	19	18	17	16	15	14	13	12	11	10	9	8	7	6	5	4	3	2	1	F
E	30	29	28	27	26	25	24	23	22	21	20	19	18	17	16	15	14	13	12	11	10	9	8	7	6	5	4	3	2	1	E
D	30	29	28	27	26	25	24	23	22	21	20	19	18	17	16	15	14	13	12	11	10	9	8	7	6	5	4	3	2	1	D
C	28	27	26	25	24	23	22	21	20	19	18	17	16	15	14	13	12	11	10	9	8	7	6	5	4	3	2	1	C		
B	26	25	24	23	22	21	20	19	18	17	16	15	14	13	12	11	10	9	8	7	6	5	4	3	2	1	B				
A	24	23	22	21	20	19	18	17	16	15	14	13	12	11	10	9	8	7	6	5	4	3	2	1	A						

STALLS - ROWS A-K, Q + T, 380 seats



CHORUS GALLERY - 250



Fan Convectors
(Two heaters to be served
by 1No Radial circuit)

Fan Convectors
(Four heaters to be served
by 1No Radial circuit)